



art of fire
RAIS

Q-Tee Series 2017/18



RAIS Q-TEE Series

A series of robust, functional stoves with a cubist look making it easy to find a place for them in any contemporary or traditional home.

There are plenty of options for possible combinations. Should it stay free standing on a hearth plate on the floor? Or be placed on a bench? Built together with matching firewood steel boxes, benches or shelves? Mounted on the wall or installed in a fireplace.

RAIS gives you - so to speak - all the elements, and it is you who is to dream, draw and bring into life the setting and the layout that are the best fit for your life and daily activities in your home and the design of your build.



RAIS Q-TEE

With the lowest emissions and highest efficiency of all RAIS stoves and fires, the DEFRA exempted Q-TEE is the ideal wood burning stove for a smaller room. Designed by RAIS specifically to meet the requirements of the British wood burning stove market.

Its sleek styling and cubist look make it perfect for the discerning customer searching for practicality with a contemporary finish. In fact, the Q-Tee is equally at home in either as traditional or modern setting. Single air control, air-cooled handle, shaking grate and removable ash tray make this a very user-friendly stove.

The Q-TEE is available in four heights: 57cm, 65cm, 85cm and 93cm with either a glass or steel frame door. You can choose the basic model and place it on the floor or on a hearth or even opt for your Q-TEE to be wall mounted. The stove is supplied with a top or rear outlet for the flue duct.



4.7kW (2-6kW min - max)



30-90 m²



80%



0,8 g/kg



435-388-565/645/850/930 mm



RAIS Q-TEE 2

Featuring a large window which offers an absolutely spectacular view of the fire, the Q-TEE 2 combines elegant RAIS functionality with outstanding performance and efficiency,

This DEFRA exempted wood burning stove with excellent environmental credentials also has the added benefit of being suitable for occasional multifuel use.

The stove can be free standing a thick hearth or placed within a suitable builders opening. A uniquely asymmetrical log store base is available to further enhance the Q-TEE 2's already stunning visual effect.

The single air control makes the stove very easy to control and other luxury features include a stay-cool door handle, shaker grate and removable stainless steel ash pan.



6.5kW (3-8kW min - max)



45-120m² (v/-20° C)



81%



1,8 g/kg



660-479-590 mm (W-D-H)



FROM FISHING NET WAREHOUSE TO CONTEMPORARY HOLIDAY HOME WITH A RAIS Q-TEE2

Tucked away among cliffs and fjords in the Scottish Highlands, a family discovered an old fishing net warehouse on a one-of-a kind location with magnificent views of a small archipelago across the sea.

With hard work and passion they managed to transform the old warehouse into a contemporary, functional and spectacular holiday home, with panoramic glass walls and sliding doors - just a stone's throw from the sea.

The house is designed to bring in the surroundings, and everywhere you turn and look, you feel the strong presence of the sea, the endless sky and rocky coast.

There is only one detail that breaks with the consistent impression of glass and bright walls: A black RAIS Q-TEE 2 faces the living room and has its back turned on the rugged landscape. It cuts across two floors - all the way to the ridge on the ground floor then through the first floor.

The Net Store House is located outside the village of Ardheslaig on the Applecross peninsula.

Photo: Landscape 365



RAIS Q-TEE 2C

'NEW'

A curvaceous version of the minimalist Q-TEE 2, the Q-TEE 2C has the same robustness of construction but with a softer and more round profile.

With a large window pane providing a magnificent view of the flames, the RAIS Q-TEE 2C fits perfectly into the contemporary or traditional home providing a warm focal point.

Available in two classic colours, black or platinum, the Q-TEE 2C can be customised to your liking. Choose from either a glass or steel door frame finished with one of four handle styles.

As with all of the stoves in the Q-TEE series, the Q-TEE 2C can be placed on a base which can be used as a log store or covered over to give maximum attention to the stove.

The new Rais Q-TEE 2C is exclusively available in the UK through Robeys and our network of valued retailers throughout the UK & Ireland.



6,5 kW (3-8 kW min - max)



45-120 m² (v/-20° C)



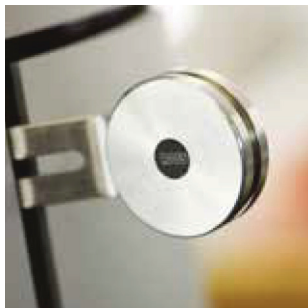
81%



1,8 g/kg



660-479-590 mm (W-D-H)



When detail emphasises design...

Add a personal touch to your RAIS Q-TEE 2C stove and create a unique expression that reflects the style, design and colours of your home interior.

Choose between multiple heights, bases, doors and a comprehensive selection of accessories. Create your design favourite - with character and edge!



A feature exclusive to the new RAIS Q-TEE 2C, you can now choose from one of four styles of handle to perfect the finish on your stove.

RAIS collection of handles are all made of the highest quality materials. The graphic expression is a round combination with the rigid lines of the steel.

All designs are fitted to a base of 4mm of stainless steel.



Handle in stainless steel. A timeless trend-steer. Classic, with holes at the top to ensure discreet ventilation, the handle is always convenient to use. Tangible design of the very best standard.

Handle in oak. Timeless and aesthetic classic. A piece of craftsmanship of masterful beauty, with a raw and natural mode of expression of its very own.

Handle in stainless steel. With an exquisitely uniform and smooth surface. The steel is of the best quality. A steel handle is a secure choice, a functional solution.

A handle in full-grain leather indicates a warm and organic mode of expression. As it is made in a natural material, the handle feels nice to the touch.

RAIS
Customized

Discover the RAIS customizer at our website ww.rais.en and try out your ideas and design dreams. Combine a wealth of details, design your favourite and see what your personal Q-TEE stove actually looks like.

ACCESSORIES

The difference lies in the details... we

know that it is the small details that make the big difference. That it is the detail that form entireties, coherence and synergy.

This is why we have created a series of accessories that match the design of the range of Q-TEE wood burning stoves to complete your home decor both practically and aesthetically.

These accessories include everything you may need for your stove from convection grilles to fire wood baskets to fireplace tools and fire racks and woodwall holders.





FIREWOOD RACK

Firewood carefully stacked and kept in place by plain black steel frames creating a rustic and sculptural expression. Turn the rack around and use it as a bench instead. Available in two sizes.

FIREPLACE TOOLS

Raw and minimalist, RAIS fireplace tools are super functional and streamlined. Knowing that small details make the big difference these accessories complete your wood burning stove and give everything a nice finish both practically and aesthetically. These fireplace tools can be mounted on to the wall or placed on the floor on a concrete base. There is also the option to choose between handles in stainless steel or leather.



RAIS WOODWALL

Elegant steel wall holder with optional back plate to ensure the firewood does not touch the wall. So, there is always plenty of dry wood handy for you. The woodwall is available in two sizes and comes in either black or white. The streamlined Woodwall is now also available as a freestanding model.

Our symbols

so you can make a quick comparison between several stoves



OUTPUT - indicates the thermal output of a wood-burning stove



HEATING AREA - indicates how many square metres the stove is designed to heat



EFFICIENCY - indicates how well the stove utilises the fuel



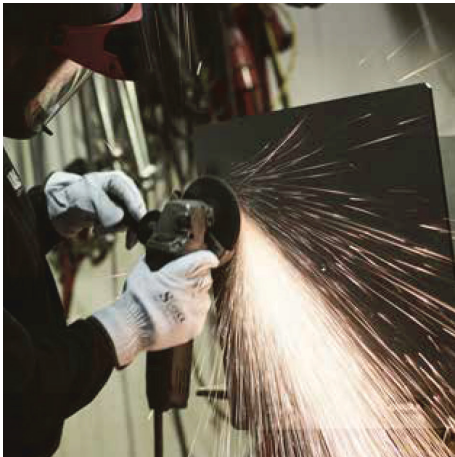
PARTICULATES - indicates the amount of residual particulates in the smoke



DIMENSIONS (W-D-H) - indicates the width, depth and height of a stand-alone stove



All of our Q-TEE stoves meet the strict Ecodesign Ready criteria that will become mandatory for all stoves by 2022.



SPECIFICATIONS

The following pages comprise of recommendations, specifications and technical data for each of the Q-TEE stoves. The same goes for dimensions, output, particulate emissions and distance to flammable materials.

This information is for your guidance only. Before installing your RAIS stove, we recommend that you read the user manual for the stove and take into account the specific recommendations applicable to that stove.

Note that you are under obligation to ensure compliance with any and all local and national laws and regulations.



STOVE SPECIFICATIONS

RAIS Q-TEE

TECHNICAL DATA

DIMENSIONS (W-D-H)

Woodburning stove's ext dim.	435-388-565/645/850/930 mm
Combustion chamber's int. dimensions	317-270-270 mm
Flue exit (diameter)	Ø150 mm
Distance from centre flue to back edge of the top plate	131mm
Distance from floor to AirSystem connection (wall)	105/185/390 mm
Distance from floor to AirSystem connection (floor)	201/207 mm
Distance from floor to centre flue exit top plate	557-637-842 mm
AirSystem connection	Ø100 mm

KEY FIGURES

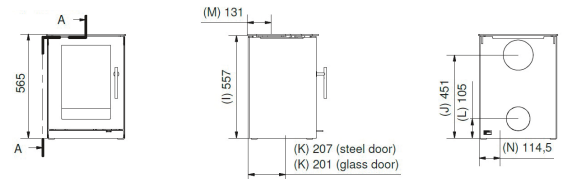
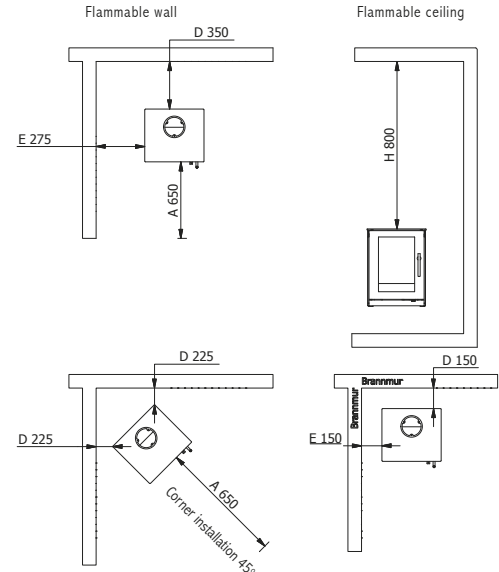
Output (Nominal)	4,7 kW
Output (Min-max)	2-6 kW
Heat (at 20 degrees)	30-90 m ²
Efficiency	80%
Particulates	0,8 g/kg

DISTANCE TO FLAMMABLE MATERIAL

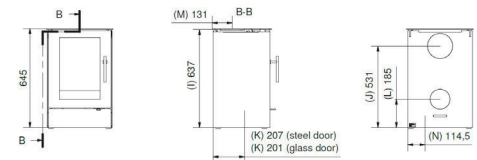
E- To wall at side	275 mm
D - to wall at back	350 mm
To non-flammable wall and at sides and back we recommend	50mm

WEIGHT

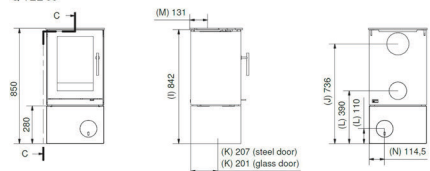
80/83/95/98 kg



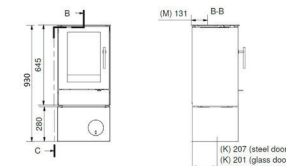
Q-TEE 65



Q-TEE 85



Q-TEE 93



defra
Department for Environment
Food and Rural Affairs



STOVE SPECIFICATIONS

RAIS Q-TEE 2 WITHOUT BASE

TECHNICAL DATA

DIMENSIONS (W-D-H)

Woodburning stove's ext dim.	582/410/598 mm
Combustion chamber's int. dimensions	446-277-265 mm
Flue exit (diameter)	Ø150 mm
Distance from centre flue to back edge of the top plate	131mm
Distance from floor to AirSystem connection (wall)	105 mm
Distance from floor to AirSystem connection (floor)	219/225 mm
Distance from floor to centre flue exit top plate	590 mm
Flue exit at back	470mm
AirSystem connection	Ø100 mm

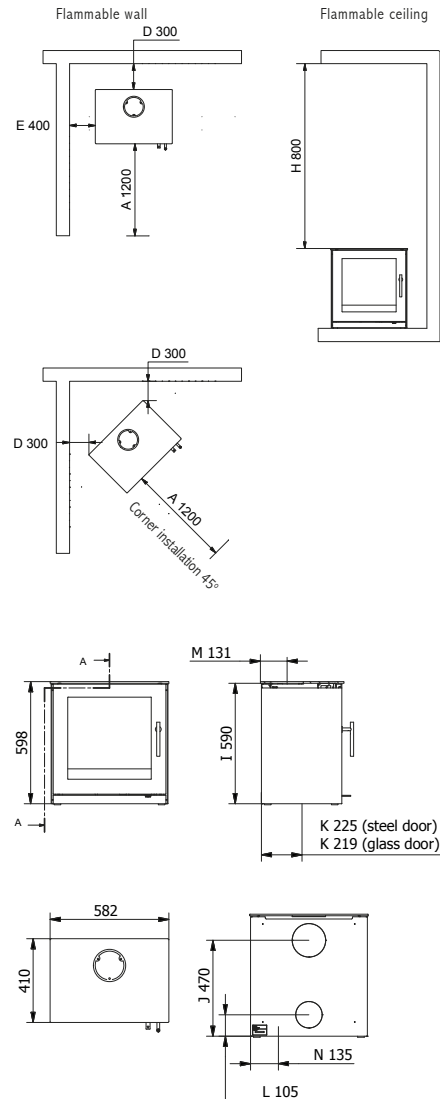
KEY FIGURES

Output (Nominal)	6,5 kW
Output (Min-max)	3-8 kW
Heat (at 20 degrees)	45-120 m ²
Efficiency	81%
Particulates	1,8 g/kg

DISTANCE TO FLAMMABLE MATERIAL

E- To wall at side	400 mm
D - to wall at back	300 mm
To non-flammable wall and at sides and back we recommend	50 mm

WEIGHT	125 kg
--------	--------



STOVE SPECIFICATIONS

RAIS Q-TEE 2 WITH BASE

TECHNICAL DATA

DIMENSIONS (W-D-H)

Woodburning stove's ext dim.	582-410-975/975 mm
Combustion chamber's int. dimensions	446-277-265
Flue exit (diameter)	Ø150 mm
Distance from centre flue to back edge of the top plate	131 mm
Distance from floor to AirSystem connection (wall)	110/490 mm
Distance from floor to AirSystem connection (floor)	219/225 mm
Distance from floor to centre flue exit top plate	975 mm
Flue exit at back	755 mm
AirSystem connection	Ø100 mm

KEY FIGURES

Output (Nominal)	6,5 kW
Output (Min-max)	3-8 kW
Heat (at 20 degrees)	45-120 m ²
Efficiency	81 %
Particulates	1,8 g/kg

DISTANCE TO FLAMMABLE MATERIAL

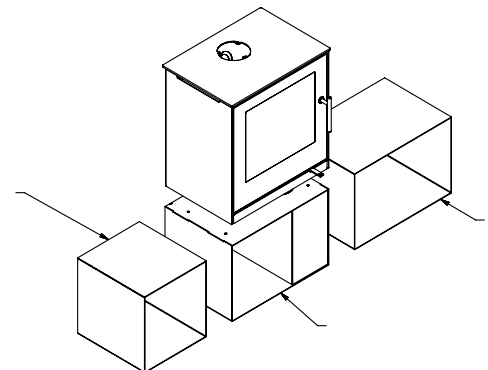
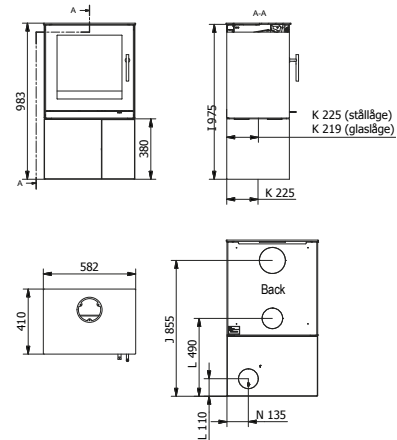
E- To wall at side	400 mm
D - to wall at back	300 mm
To non-flammable wall and at sides and back we recommend	50 mm

WEIGHT	147 kg
--------	--------

THE COMBI BASE

These extra modules provide flexibility and various options in terms of the design. Place your Q-TEE2 as you see fit! Then use further modules to implement your ideas for the room.

The Q-TEE model can also be placed on a combi base element (see drawing) Combi base elements can also be used individually or multiple as an alternative firewood rack.



STOVE SPECIFICATIONS

RAIS Q-TEE 2C

TECHNICAL DATA

DIMENSIONS (W-D-H)

Woodburning stove's ext dim.	660/479/590 mm
Combustion chamber's int. dimensions	446-277-265 mm
Flue exit (diameter)	Ø150 mm
Distance from centre flue to back edge of the top plate	159 mm
Distance from floor to AirSystem connection (wall)	110 mm
Distance from floor to AirSystem connection (floor)	219/225 mm
Distance from floor to centre flue exit top plate	595 mm
Flue exit at back	470mm
AirSystem connection	Ø100 mm

KEY FIGURES

Output (Nominal)	6,5 kW
Output (Min-max)	3-8 kW
Heat (at 20 degrees)	45-120 m²
Efficiency	81%
Particulates	1,8 g/kg

DISTANCE TO FLAMMABLE MATERIAL

E- To wall at side	400 mm
D - to wall at back	300 mm
To non-flammable wall and at sides and back we recommend	50 mm

WEIGHT	125 kg
--------	--------

